

TABLE II
Some Thermodynamic Parameters of Some *n*-Alkanes at the UCSP with a Polyethylene
Fraction of Molecular Weight 246,000

<i>n</i> -Alkane	Critical temperature of solvent, °C.	Reduced density	UCSP, atm.	T, °C.	Solubility parameter δ_1 , (cal./cc.) ^{1/2}
Ethane	32	2.32	1,270	120	6.18
		2.15	1,180	150	5.73
Propane	97	2.275	582	110	6.30
		2.15	575	150	5.72
Butane	152	2.32	204	110	6.12
		2.15	255	157	5.60
Pentane	197	2.35	34.3	110	5.91
		2.25	50	120	5.73
		2.175	89.5	150	5.51

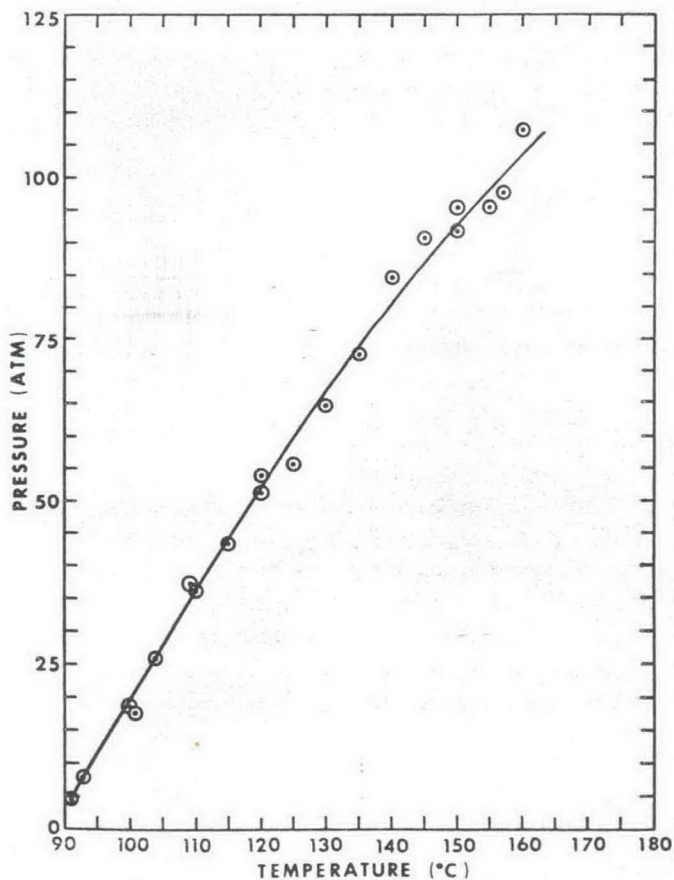


Fig. 6. Critical locus for polyethylene-*n*-pentane.